



GP series GP 12170



Valve Regulated Lead Acid Battery

Maintenance-Free Sealed Lead Acid Battery.

Absorbent Glass Mat (AGM) technology for efficient gas recombination of up to 99%.

Design for Standby Power Applications

【Design Life】

Up to 5 Years in Standby Service at 25°C

Eurobat (20°C) : 3-5 years, Standard Commercial

【Operating Temperature Range】

Nominal Operating Temperature : 25°C (77°F)

Discharge : -15°C ~ 50°C (5°F~122°F)

Charge: -15°C ~ 40°C (5°F~104°F)

Storage: -15°C ~ 40°C (5°F~104°F)

【Float Charging Voltage】

13.5 ~ 13.8 VDC/Unit at 25°C (77°F)

【Equalization Charging Voltage】

14.4 ~ 15.0 VDC/Unit at 25°C (77°F)

【Self Discharge】

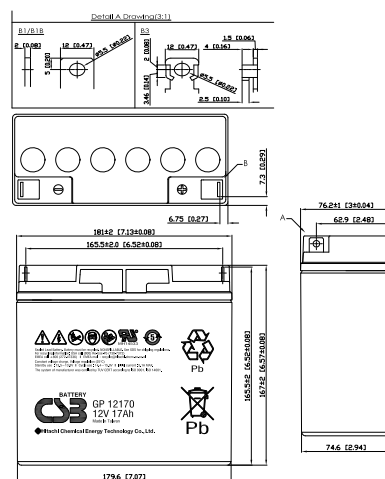
Less than 10% after 90 days, can be stored up to 6 months at 25°C (77°F);

Fully recharging is required before usage, and charged sooner if stored at higher temperature than 25°C (77°F).

Specification

Design according with IEC 61056-1/2: 2012

Nominal Voltage	12V (6 cells per unit)		
Nominal Capacity	17 Ah @20hr-rate to 1.75V per cell @25°C (77°F)		
Weight	Approx. 5.50 Kg (12.12 lbs)		
Maximum Discharge Current	230A (5sec)		
Internal Resistance	Approx. 14.0mΩ		
Short Circuit Current	532A		
Maximum Charge Current	5.10A		
Terminal types	B1/B3/B1B terminal to accept M5 bolt		
Terminal tightening torque	30.4±6.1 Kgf-cm / 26.4±5.3 Lbf-in / 3.0±0.6 N-m		
Container Material	ABS (UL 94-HB) & Flame Retardant (94-V0) available upon request		
Dimensions	Length (L)	181.0±2.0 mm	7.13±0.08 inch
	Width (W)	76.2±1.0 mm	3.00±0.04 inch
	Container Height (h)	167.0±2.0 mm	6.57±0.08 inch
	Overall Height (H)	167.0±2.0 mm	6.57±0.08 inch



Constant Current Discharge Characteristics Unit: A (25°C, 77°F)

F.V/Time	5 MIN	10MIN	15MIN	30MIN	60MIN	90MIN	2HR	3HR	5HR	8HR	10HR	20HR
1.60V	80.2	50.9	38.5	23.4	13.8	10.1	8.03	5.72	3.63	2.37	1.93	1.00
1.67V	71.2	47.5	36.5	22.9	13.7	10.0	7.99	5.69	3.61	2.35	1.90	0.95
1.70V	67.4	45.8	35.6	22.7	13.6	9.99	7.97	5.67	3.60	2.34	1.89	0.94
1.75V	61.0	43.1	34.1	22.3	13.4	9.86	7.92	5.64	3.59	2.32	1.86	0.91
1.80V	54.5	40.2	32.7	21.8	13.3	9.79	7.87	5.61	3.58	2.30	1.83	0.88
1.85V	48.0	37.3	31.0	21.2	13.1	9.68	7.80	5.56	3.56	2.27	1.80	0.85

Constant Power Discharge Characteristics Unit: W (25°C, 77°F)

F.V/Time	5MIN	10MIN	15MIN	30MIN	60MIN	90MIN	2HR	3HR	5HR	8HR	10HR	20HR
1.60V	890	583	449	281	166	121	96.4	68.6	43.6	28.4	23.1	12.0
1.67V	790	544	423	275	164	120	96.0	68.5	43.4	28.3	22.8	11.5
1.70V	748	527	413	272	163	119	95.8	68.4	43.3	28.2	22.7	11.3
1.75V	677	493	395	267	161	119	95.3	67.9	43.2	27.9	22.4	10.9
1.80V	605	460	377	261	160	118	94.6	67.3	43.0	27.6	22.0	10.5
1.85V	533	427	361	254	158	116	93.8	66.8	42.9	27.3	21.7	10.1

Please refer to the official site for the Itest rating confirmation. URL: www.csb-battery.com

Issued: 200213

Sales Offices

日立化成能源科技股份有限公司
Hitachi Chemical Energy Technology Co., Ltd.

BUSINESS HEADQUARTERS

Tel: +886-2-2880-5600

Fax: +886-2-2888-3300

USA OFFICE

Tel: +1-817-244-7777 / 1-(800)3-CSB-USA (272872)

Fax: +1-817-244-4445

SHENZHEN OFFICE (CHINA)

Tel: +86-755-8831-6488, 8831-6775

Fax: +86-755-8831-6075

EUROPE (EMEA) OFFICE

Tel: +31(0)180-418-140

Fax: +31(0)180-418-327

SHANGHAI OFFICE (CHINA)

Tel: +86-21-5046-1622, 5046-0833

Fax: +86-21-5046-1046

TAIPEI OFFICE

Tel: +886-2-2880-5600

Fax: +886-2-2888-3300

BEIJING OFFICE (CHINA)

Tel: +86-10-5820-5336, 5820-5338

Fax: +86-10-5820-3053

Recognized under UL 1989,
and certified by ISO 9001, 14001.

